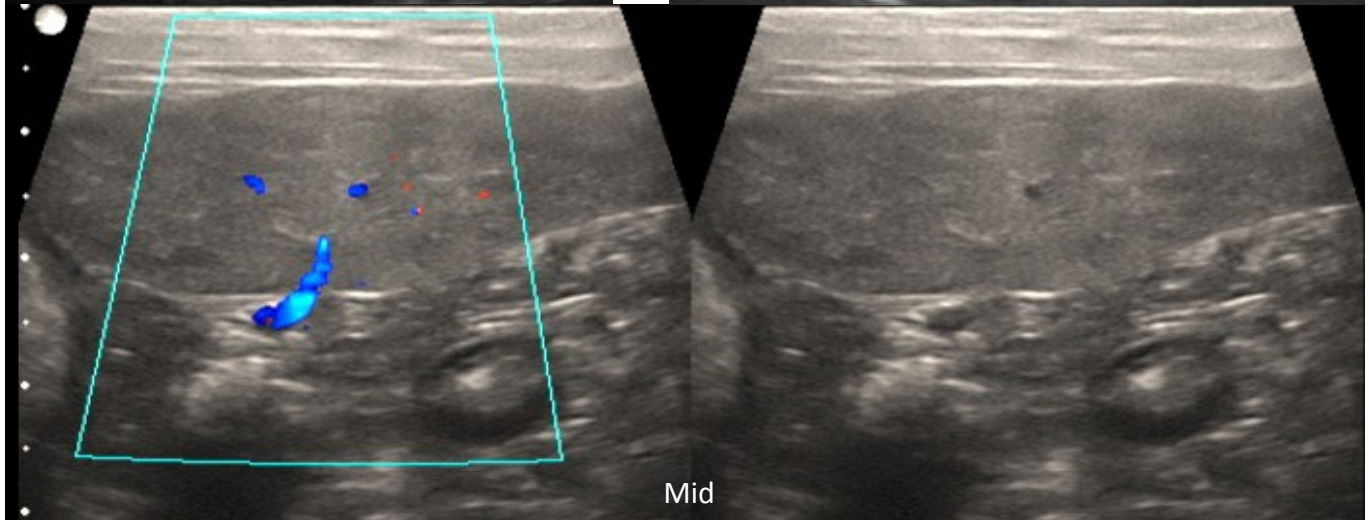
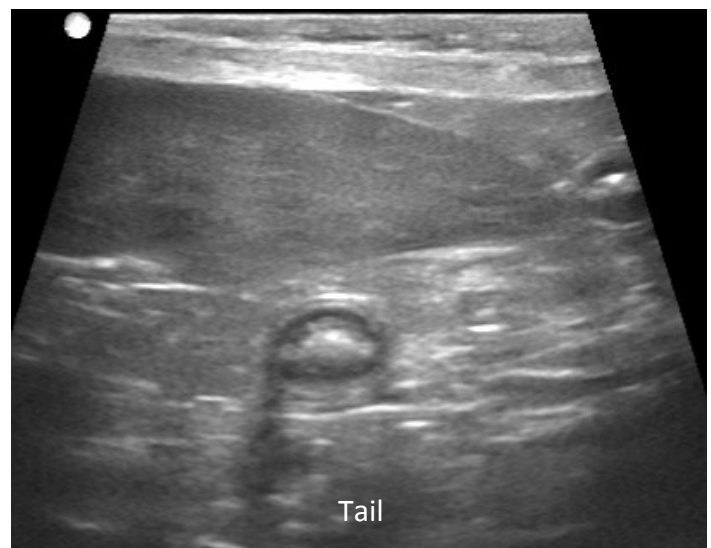
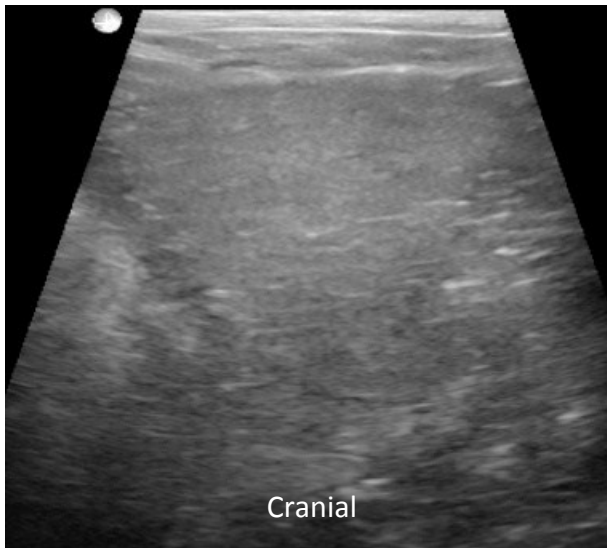


# Spleen

## Tips:

- Use a high frequency when possible
- Cranial Spleen - locate the margins of the cranial spleen. Then increase depth and tilt the transducer towards the patients right (point the transducer to the patients left) until you see the spleen dive down on the screen. Standing the animal upright (especially larger animals) will allow for better visualization at times.
- Mid Spleen - Image should be taken at the hilum where the splenic vein can be seen (split screen with color)
- Splenic Tail -
  - Cats: Slide caudal until you see the caudal margins
  - Dogs: Once you find the caudal margins, follow all the way through to the tail of the spleen by sliding the transducer to the patients right.



# Spleen

## Images:

- Long Axis Cranial Head
- Long Axis Body
- Long Axis Splenic Vein w/ Color
- Long Axis Caudal Tail
- Split Screen Liver and Spleen (do not change any settings for this image)

## Videos:

- Cranial half of spleen
- Caudal half of spleen

