

Left Kidney

Tips:

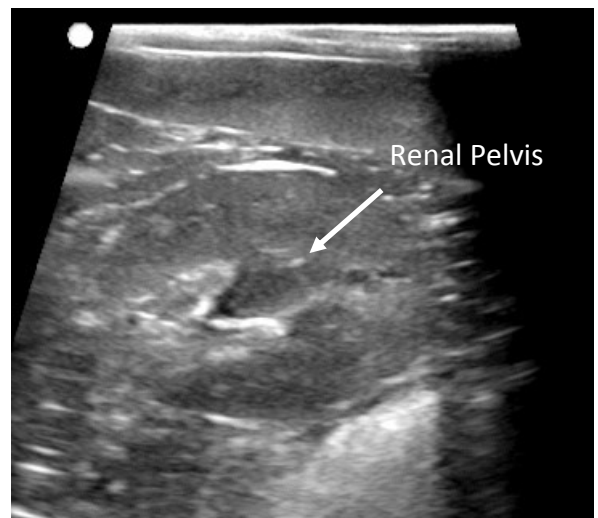
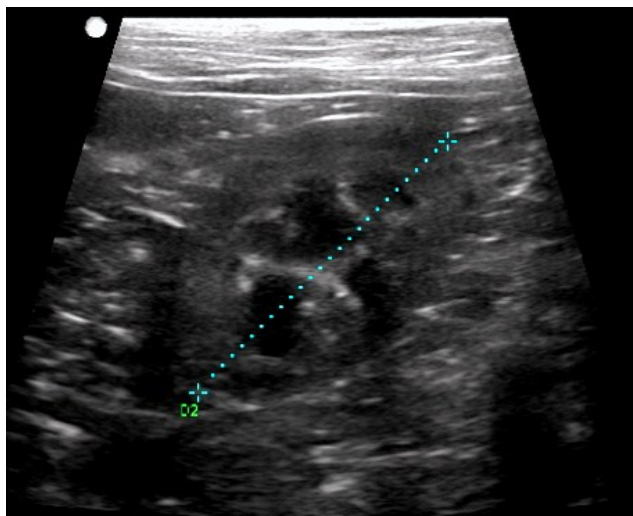
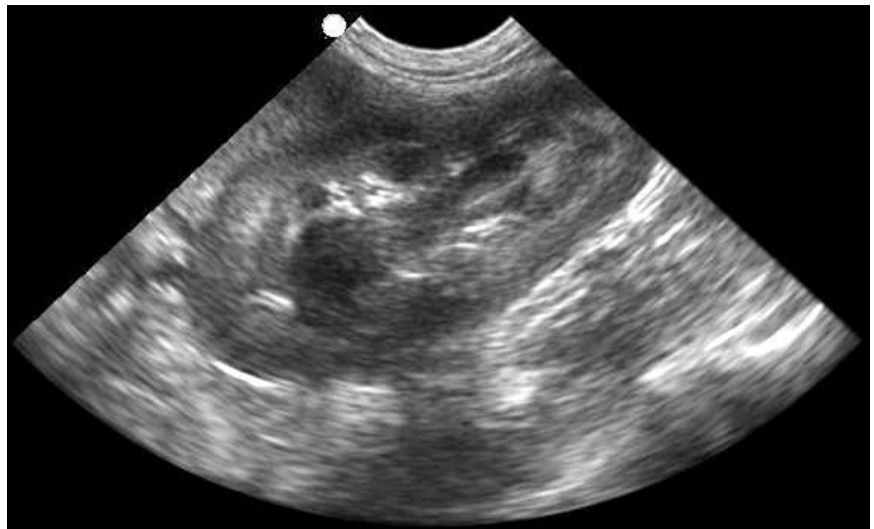
- Increase the depth after scanning the bladder
- You may need to lower the frequency (or switch to a lower frequency transducer) after scanning the bladder
- Palpate the last rib: Kidney is located posterior and medial to the caudal aspect of spleen
- Renal Pelvis: Look for backwards C or U shape with a hyperechoic (bright) break in the cortex
- When the kidney is difficult to evaluate try using a lateral decubitus or standing position

Images:

- Long Axis
- Long Axis with measurement
- Short Axis at the Renal Pelvis

Videos:

- Long Axis (Rt - Lt)



Right Kidney

Tips:

- Palpate the last rib
- Increase the depth so you do not miss the kidney. Readjust the depth once it is located
- You may need to lower the frequency or switch transducers
- Renal Pelvis: Look for backwards C or U shape with a hyperechoic (bright) break in the cortex
- When the kidney is difficult to evaluate try using a lateral decubitus or standing position

Images:

- Long Axis
- Long Axis with measurement
- Short Axis at the Renal Pelvis

Videos:

- Long Axis (Rt - Lt)

