

Left Adrenal

Tips:

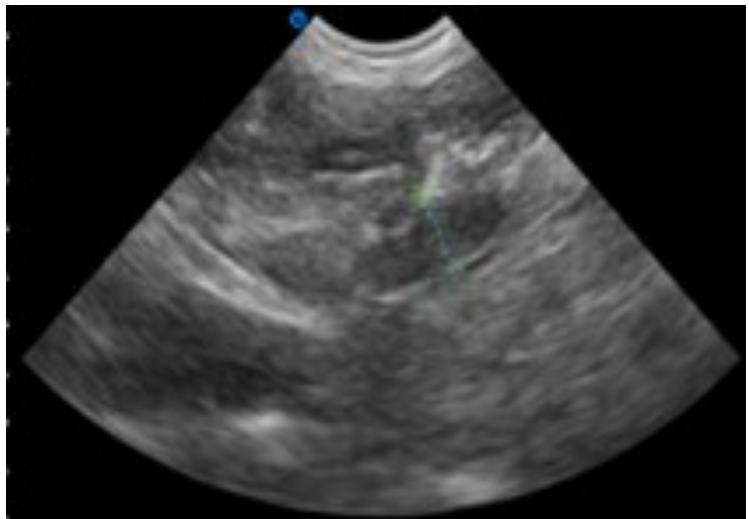
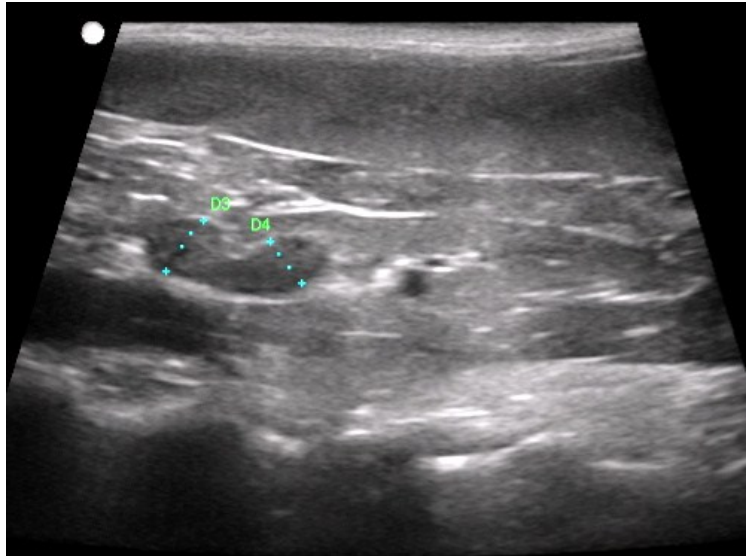
- Start at the cranial portion of the kidney and tilt the beam medial. The transducer beam should be pointing medial towards the aorta
- Look for the renal artery (the adrenal gland is located cranial to the artery). Use Color Doppler to follow the renal artery from the kidney
- If the dorsal position does not work, try to reposition the animal into a lateral recumbent position
- You may have to rotate the transducer slightly to elongate the gland in a dorsal position
- Lateral recumbent position
 - Slide lateral to the last rib and rotate the transducer so the back is pointing towards the animal's left knee (this is about a 30° angle from a long axis position)

Images:

- Long Axis
- Long Axis with measurement

Videos:

- Long Axis (Kidney - Ao/CVC)



Right Adrenal

Tips:

- Start at the cranial portion of the kidney and tilt the beam medial. The transducer beam should be pointing medial towards the CVC/Aorta.
- Use color Doppler to follow the renal artery from the kidney
- If the dorsal position does not work, try to reposition the animal into a lateral recumbent position
- You may have to rotate the transducer slightly to elongate the gland
- Lateral recumbent position: slide lateral to the rib cage (some animal's may require a more lateral approach than others) and tilt the beam of the transducer until you locate the CVC

Images:

- Long Axis
- Long Axis with measurement

Videos:

- Long Axis (Kidney - Ao/CVC)

