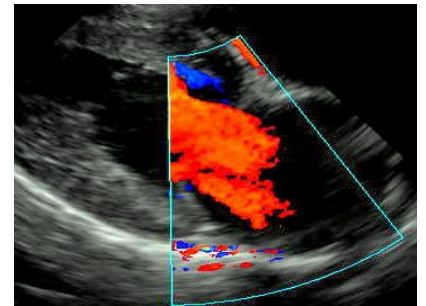


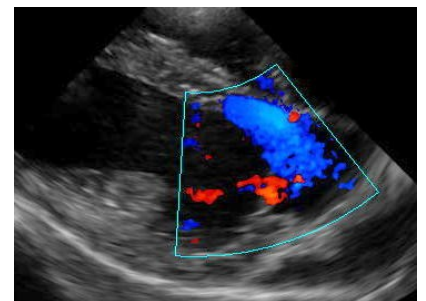
ONCURA PARTNERS ECHOCARDIOGRAPHY PROTOCOL

Right Parasternal Long Axis

- 4-Chamber view: Image
- 4-Chamber view Video
- Color Doppler LA/MV: Video

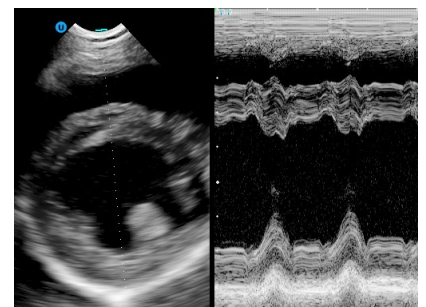


- LV Outflow Tract: Image
- LV Outflow Tract: Video
- Color Doppler LVOT/AV: Video

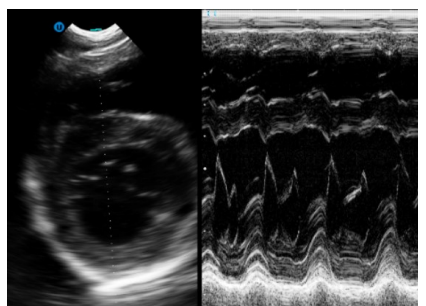


Right Parasternal Short Axis

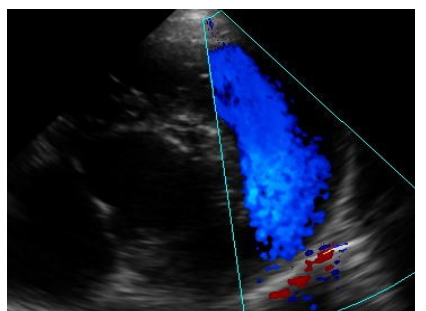
- Papillary Muscles: Image (x3)
- Papillary Muscles: Video
- M-Mode Image of papillary muscles (x3)



- Mitral Valve: Image
- Mitral Valve: Video
- M-Mode Image of MV



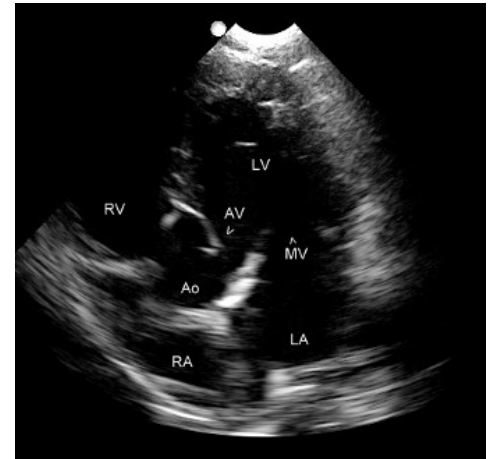
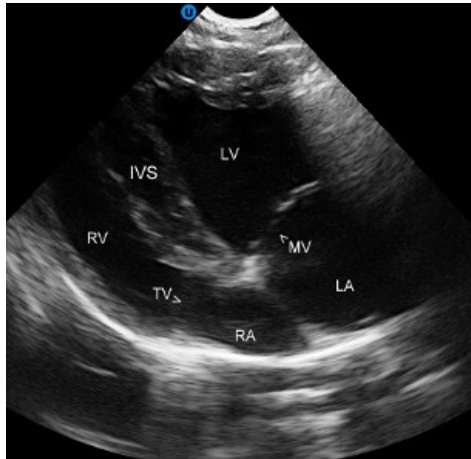
- 5 Chamber (AV): Image (x3)
- 5 Chamber (AV): Video
- Color Doppler RVOT/PV: Video



ONCURA PARTNERS ECHOCARDIOGRAPHY PROTOCOL

Left Apical Long Axis

- 4-Chamber view: Image
- 4-Chamber view: Video
- 5-Chamber view: Image
- 5-Chamber view: Video
- Color Doppler LA/MV: Video
- Color Doppler RA/TV: Video
- Color Doppler LVOT/AV: Video



Right Parasternal Short Axis Measurements

- 2D Image of AV
 - LA and Aortic Root (x3)
- Canine Patients: M-mode
 - IVSd, LVDd, LVPWd (x3)
 - IVSs, LVDs, LVPWs (x3)
- Feline Patients: 2D
 - IVSd, LVDd, LVPWd (x3)
 - IVSs, LVDs, LVPWs (x3)

