

From appetite to rear-end,
and everything in between!

"Practical"
Gastroenterology
SEMINAR

17 CE Hours
ETVMA approved

February 6 & 7, 2016

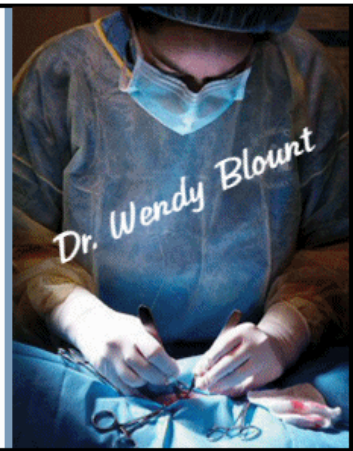



Table Of Contents

Section 1: Vomiting	-----	-----	-----	-----	-----	Red Tab
PowerPoint Slides	-----	-----	-----	-----	-----	28 pages
Introduction	-----	-----	-----	-----	1-2	
Causes of Vomiting	-----	-----	-----	-----	3-4, 6-13, 14-15	
Gastric Disease	-----	-----	-----	6-8		
Slow Bowls	-----	-----	-----	6-7		
<i>Helicobacter</i> gastritis	-----	-----	-----	8		
Intestinal & Colon Disease	-----	-----	-----	9		
Liver & Biliary Tract	-----	-----	-----	10		
Abdominal Disease	-----	-----	-----	10-11		
Neurologic Disease	-----	-----	-----	11		
Systemic Disease	-----	-----	-----	11-12		
Toxicity: NSAID, Corticosteroid	-----	-----	-----	12-13		
Environmental Causes of Vomiting	-----	-----	-----	15		
<i>Physaloptera</i>	-----	-----	-----	15-16		
Motility Disorders	-----	-----	-----	19		
Dysautonomia	-----	-----	-----	26-27		
Working Up the Vomiting Patient	-----	-----	-----	-----	15-19	
Empirical Treatment	-----	-----	-----	15		
Pattern Recognition	-----	-----	-----	16, 17		
Step-Wise Diagnostic Plan	-----	-----	-----	16		
TAMU GI Lab Tests	-----	-----	-----	17		
Barium Studies	-----	-----	-----	18-19		
Endoscopy	-----	-----	-----	19		
Hematemesis	-----	-----	-----	-----	20-21	
GI Drugs	-----	-----	-----	-----	23-25	
H2 Blockers, Proton Pump Inhibitors	-----	-----	-----	23		
Antiemetics	-----	-----	-----	24		
Prokinetics, cytoprotective agents, Mucosal protective agents	-----	-----	-----	25		
Case: Mandy - Gastrointestinal Interstitial Tumor	-----	-----	-----	-----	4-6	
Cases: Baylor & Lady - Chronic Gastric Dilatation & Volvulus	-----	-----	-----	-----	8-9	
Case: Bull Dog - Idiopathic Muscularis Hypertrophy	-----	-----	-----	-----	13-14	
Case: McDuff - Gastric Adenocarcinoma	-----	-----	-----	-----	17-18	
Case: Nubbin Wayne - Leiomyosarcoma	-----	-----	-----	-----	21-23	
Case: Zoey - Dysautonomia	-----	-----	-----	-----	25-26	

Table Of Contents, p. 2

Section 1: Vomiting (cont'd)	Red Tab
PowerPoint Slides (cont'd)	28 pages
Handout Summary	27-28
Acknowledgements	28
Laboratory Submission Information - TAMU GI Lab Form	1 page
Diagnostic Handout - Fluid Analysis Chart	1 page
Client Information Handouts	16 pages
Diaphragmatic Hernia	2 pages
Endoscopy	3 pages
Gastric Dilatation & Volvulus	3 pages
Hemorrhagic Gastroenteritis	2 pages
Vomiting Cats	3 pages
Vomiting Dogs	3 pages
Drug Handouts	22 pages
Amoxicillin	1 page
Oral Antacids	1 page
Bethanecol	1 page
Bisacodyl	1 page
Bismuth subsalicylate	1 page
Chlorpromazine	1 page
Cimetidine	1 page
Cisapride	1 page
Dimenhydrinate	1 page
Erythromycin	1 page
Famotidine	1 page
Fenbendazole	1 page
Maripotant	1 page
Metoclopramide	1 page
Metronidazole	1 page
Omeprazole	1 page
Praziquantel	1 page
Pyrantel pamoate	1 page
Ranitidine	1 page
Sucralfate	1 page
The Story of Bull Dog - A Lesson in Forgiveness	5 pages

Section 2: Megaesophagus	White Tab
PowerPoint Slides	18 pages
Cats vs. Dogs	1
Definition	1
Etiology	1-7
Localized Megaesophagus	2-4
Stricture & Foreign Body	2-3
<i>Spirocerca Lupi</i>	3-4
Persistent Right Aortic Arch (PRAA)	4-6
Neoplasia	6
Esophageal diverticulum	6-7

Table Of Contents, p. 3

Section 2: Megaesophagus (cont'd)	White Tab
PowerPoint Slides (cont'd)	18 pages
Generalized Megaesophagus	7-9
Myasthenia Gravis	7-8
Esophagitis	7
Polyneuropathy	8-9
Distinguishing Vomiting, Regurgitation, Coughing	9
Pattern Recognition	10
Diagnosics	10-13
Radiographs, with contrast	10-11
Fluoroscopy	12
Minimum Database	12
Thyroid Panel, ACTH Stim, MG Titer	13
Ancillary Tests	13
Treatment	13-17
Elevated Feeding	13-15
Gastrostomy	16
Prokinetics	16
Aspiration Pneumonia	16
Esophagitis	16
Immunosuppression	17
Prognosis	17
Case: Gigi - Esophageal Foreign Body	2
Case: Shelter Dog - PRAA	4-5
Case: Shar Pei Puppy - Esophageal Diverticulum	6
Case: Oreo - Cat with Myasthenia Gravis	8
Case: Enya - Esophagitis	17-18
Handout Summary	18
Acknowledgements	18
Lab Submission Information	3 pages
TAMU GI Lab Endocrinology Tests	1
Comparative Neuromuscular Laboratory	2-3
Submission Form	2
Submission Instructions	3
Diagnostic Handouts - Adrenal Testing	5 pages
Dogs	1-4
ACTH Stimulation Test	1-2
Low Dose Dexamethasone Test	2-3
High Dose Dexamethasone Test	3
Urine Cortisol:Creatinine	3
Resting Cortisol	3-4
Abdominal Ultrasound	4
Endogenous ACTH	4
Cats	4-5
Low Dose Dexamethasone Test	4
High Dose Dexamethasone Test	4-5
ACTH Stimulation Test	5

Table Of Contents, p. 4

Section 2: Megaesophagus (cont'd)	White Tab
Client Information Handouts	9 pages
Hiatal Hernia	2 pages
Canine Megaesophagus	2 pages
Myasthenia Gravis	5 pages
Drug Handouts	5 pages
Azathioprine	1 page
Cisapride	see Red Section 1 - Vomiting
Bethanecol	see Red Section 1 - Vomiting
Omeprazole	see Red Section 1 - Vomiting
Prednisolone	2 pages
Pyridostigmine	2 pages
Sucralfate	see Red Section 1 - Vomiting

Section 3: Liver Disease	Blue Tab
PowerPoint Slides	28 pages
Elevated Liver Enzymes in the Well Pet	1
Reactive Hepatopathy	2
Pattern Recognition	2-3
Diagnostics	3-4
Bile Acids	3
Ammonia	3-4
Adrenal Testing	4
Liver Aspiration Cytology	4
Chronic Liver Disease	4-14
Portasystemic Shunt, Microvascular Dysplasia	5-8
Chronic Inflammatory Liver Disease	9-14
Hepatic Encephalopathy	8
Nutrition for Liver Disease	9
Antibiotics for Liver Disease	9
Feline Cholangiohepatitis	14
Gall Bladder Aspiration	14
Acute Liver Failure	15-23
Bicarbonate Therapy	17
Icterus	18
Hepatotoxins	18
Why Liver Patients Crash	23
Coagulopathies	23-24
Hepatic Lipidosis	24-25
Case: Diego - Portasystemic Shunt	5-6
Case: Pockets - Chronic Inflammatory Liver Disease	9-12
Case: Benzer - Acute Necrotizing Hepatitis	15-17
Case: Sebastian - Cholecystitis	19-23
Case: Popcorn - Cirrhosis	25-27
Handout Summary	27
Acknowledgements	27-28

Table Of Contents, p. 5

Section 3: Liver Disease (cont'd)	Blue Tab
Diagnostic & Treatment Handouts	5 pages
Bicarbonate Therapy	3 pages
Interpretation of Idexx SNAP Bile Acids	1 page
IV Potassium Therapy Chart	1 page
Client Handouts	16 pages
Cholangiohepatitis	2 pages
Chronic Liver Disease	5 pages
Feline Fatty Liver	3 pages
Icterus	3 pages
Portasystemic Shunts	3 pages
Drug Handouts	27 pages
Amoxicillin	see Red Section 1 - Vomiting
Carnitine	1 page
Colchicine	1 page
Cyproheptadine	1 page
Furosemide	2 pages
Lactulose	2 pages
Levetiracetam	1 page
Maripotant	see Red Section 1 - Vomiting
Metronidazole	see Red Section 1 - Vomiting
Milk Thistle	10 pages
SAMe	3 pages
Spironolactone	2 pages
Taurine	1 page
Ursodiol	2 pages
Zonisamide	1 page

Section 4: Dry Labs	Orange Tab
Dry Lab Instructions	10 pages
Esophagostomy Tube I	3 pages
Gastrostomy Tube Placement	5 pages
Liver Aspiration Cytology	2 pages
Liver Cytology	3 pages

Section 5: Pancreatitis	Yellow Tab
PowerPoint Slides	22 pages
Acute vs. Chronic Pancreatitis	1
Clinical Presentation	1-4
Predispositions	1-3
Clinical Signs	3-4
Sequellae	4
Diagnosis	4-13
Bloodwork	5-7
SNAP PL and PLI	6
Radiographs	10-12

Table Of Contents, p. 6

Section 5: Pancreatitis (cont'd)				Yellow Tab
PowerPoint Slides (cont'd)				22 pages
	Abdominocentesis			12
	Diagnostic Surgery			12-13
Treatment				13-21
	Fluid Therapy			14-15
	Case - Flop			15-16
	Colloids, Antibiotics, Analgesia, Antioxidants			16
	Heparin, Antiemetics, Other			16-18
	Monitoring			18-19
	Nutrition			19-20
	Feline Pancreatitis			20-21
Prognosis				21-22
Handout Summary & Acknowledgements				22
Laboratory Information				6 pages
	Cornell Credit card Payment Form			1 page
	Cornell Comparative Coagulation Sampling Instructions			2 pages
	Cornell Comparative Coagulation Submission Form			1 page
	Cornell Comparative Coagulation Test Roster			2 pages
Diagnostic and Treatment Aids				33 pages
	Bicarbonate Administration		see Blue Section 3 - Liver Disease	
	Cat Food Nutritional Information			30 pages
	Fluid Analysis Diagnostic Chart		see Red Section 1 - Vomiting	
	Hyperlipidemia			3 pages
	Potassium Supplementation		see Blue Section 3 - Liver Disease	
Client Handouts				6 pages
	Canine Pancreatitis			3 pages
	Feline Pancreatitis			3 pages
Drug Handouts				15 pages
	Fish Oil			8 pages
	Mirtazapine			2 pages
	Subcutaneous Fluid Administration			5 pages
Section 6: Feeding Tubes				Green Tab
PowerPoint Slides - Feeding Tubes				22 pages
	Nasoesophageal Tubes			1-2
	Pharyngostomy Tubes			2
	Esophagostomy Tubes			2-9
	Gastrostomy Tubes (Eld Device)			10-18
	Gastrostomy Tubes (Endoscope)			18
	Gastrostomy Tubes (Surgical)			19-20
	Jejunostomy			20
	Managing Feeding Tubes			20-22
Handout Summary & Acknowledgements				22
Treatment Handouts				13 pages
	Placement of PEG (Endoscope) Tubes and Jejunostomy tubes			5 pages
	Tube Feeding Instructions			2 pages

Table Of Contents, p. 7

Section 6: Feeding Tubes	Green Tab
Treatment Handouts (cont'd)	13 pages
Tube Feeding Diets	6 pages
Client Handouts	10 pages
Esophagostomy Tube Feeding	2 pages
Gastrostomy Tube Feeding	3 pages
Instructions for Tube Feeding	1 page
Tube Feeding Your Pet	4 pages
Section 7: Intestinal Disease	Pink Tab
PowerPoint Slides - Diarrhea	17 pages
Introduction	1
Diagnostics	1-2
Symptoms - Large vs Small Bowel	2
Empirical Treatment	3
Inflammatory Bowel Disease	6-8
Boxer Colitis	9
Antibiotic Responsive Diarrhea	12
Hemorrhagic Gastroenteritis (see also Vomiting)	12
Probiotics	12-13
Fecal Transplantation	13
Feline Hairballs	13
Cats are Carnivores	13-14
Feline Triaditis	14
Feline Megacolon	15
Feline GI Lymphoma	15-16
APUDoma	16
Case: Benji Boy - <i>Hepatozoon</i>	3-5
Case: Waddles - Traumatic Diaphragmatic Hernia	9-10
Case: Inky - Peritoneopericardial Diaphragmatic Hernia	10-11
Handout Summary & Acknowledgements	16-17
Laboratory Information	16 pages
CSU Clinical Immunology Submission Form	1 page
CSU Lymphoma Diagnostic Guide	7 pages
FISH Analysis Credit Card Form	1 page
FISH Analysis Submission Form	1 page
Auburn Molecular Diagnostics Submission Form	1 page
Mira Vista Diagnostics Test Menu	2 pages
Mira Vista Diagnostics Submission Form	1 page
Auburn PCR Submission Kit	2 pages
Diagnostic Aid - Purina Fecal Scoring	2 pages
Purina Fecal Scoring System	1 page
CIBDAI - Canine Inflammatory Bowel Disease Activity Index	1 page
Client Handouts	29 pages
Antibiotic Responsive Diarrhea	2 pages
Campylobacter	2 pages
Colitis	2 pages

Table Of Contents, p. 8

Section 7: Intestinal Disease (cont'd)				Pink Tab
Client Handouts (cont'd)				29 pages
Constipation & Megacolon in Cats				3 pages
Coronavirus				1 page
Diarrhea				2 pages
Exocrine Pancreatic Insufficiency				2 pages
Flatulence				2 pages
Giardia				1 page
Hemorrhagic Gastroenteritis		see Red Section 1 - Vomiting		
Inflammatory Bowel Disease				5 pages
Administering Drugs by Injection				1 page
Parasites				2 pages
Protein Losing Enteropathies				4 pages
Drug Handouts				14 pages
Administering Drugs by Injection				1 page
Amoxicillin		see Red Section 1 - Vomiting		
Antidiarrheals				2 pages
CCNU				2 pages
Chlorambucil				1 page
Cyclosporine				2 pages
Enrofloxacin				1 page
Fenbendazole		see Red Section 1 - Vomiting		
Metronidazole		see Red Section 1 - Vomiting		
Opiate Antidiarrheals				2 pages
Praziquantel		see Red Section 1 - Vomiting		
Pyrantel pamoate		see Red Section 1 - Vomiting		
Sulfasalazine				2 pages
Tylosin				1 page
Section 8: The Acute Abdomen				Gold Tab
PowerPoint Slides				10 pages
Differential Diagnosis				1-2
Assessment of Collapse				2-4
Quick Assessment Tests				3-4
Fluid Therapy				4-5
Ascites				5
History				5-6
Physical exam				6-8
In House Diagnostics				8
Drug Therapy				9
Imaging				9-10
Handout Summary				10
Diagnostic Handouts				19 pages
Coagulopathy Diagnostic Chart				2 pages
Arrhythmia Treatment				1 page
Antiarrhythmic Drugs				1 page
Arrhythmia Diagnostic Chart				2 pages

Table Of Contents, p. 8

Section 8: The Acute Abdomen (cont'd)	-----	-----	-----	Gold Tab
Diagnostic Handouts (-----	-----	-----	19 pages
CPR Drugs	-----	-----	-----	1 page
CPR Flow Sheet	-----	-----	-----	1 page
Emergency Evaluation Cat	-----	-----	-----	2 pages
Emergency Evaluation Dog	-----	-----	-----	2 pages
Evaluating Blood Pressure in Dogs and Cats	-----	-----	-----	7 pages