

*From appetite to rear-end,
and everything in between!*

"Practical"
Gastroenterology
SEMINAR

February 7 & 8, 2015 - Lufkin, TX

17 CE Hours
ETVMA approved

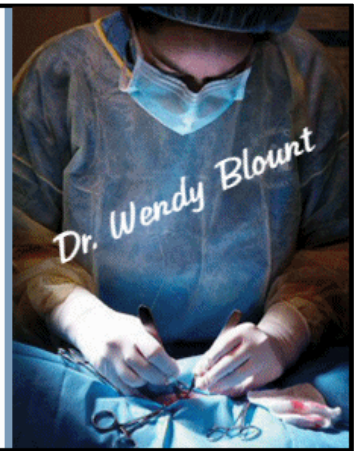



Table Of Contents

Section 1: Vomiting	Red Tab
PowerPoint Slides	20 pages
Introduction	1-2
Causes of Vomiting	2-10
Slow Bowls	4-5
Empirical Treatment	10
Physaloptera	11
Pattern Recognition	11-13
Step-Wise Diagnostic Plan	12-14
Hematemesis	15-16
GI Drugs	16-18
Dysautonomia	18-19
Handout Summary	20
Laboratory Submission Information - TAMU GI Lab Form	1 page
Drug Handouts	22 pages
Amoxicillin	1 page
Oral Antacids	1 page
Bethanecol	1 page
Bisacodyl	1 page
Bismuth subsalicylate	2 pages
Cimetidine	1 page
Cisapride	1 page
Erythromycin	1 page
Famotidine	1 page
Fenbendazole	1 page
Maripotant	1 page
Metoclopramide	2 pages
Metronidazole	2 pages
Omeprazole	1 page
Praziquantel	1 page
Pyrantel pamoate	1 page
Ranitidine	1 page
Sucralfate	2 pages
Client Information Handouts	5 pages
Diaphragmatic Hernia	2 pages

Table Of Contents, p. 2

Section 1: Vomiting (cont'd)					Red Tab
Client Information Handouts (Cont'd)					5 pages
Endoscopy					2 pages
Hemorrhagic Gastroenteritis					1 page
Section 2: Megaesophagus					White Tab
PowerPoint Slides					15 pages
Cats vs. Dogs					1
Definition					1
Etiology					1-6
Localized Megaesophagus					2-4
<i>Spirocerca Lupi</i>					2-3
Persistent Right Aortic Arch (PRAA)					3
Neoplasia					4
Esophageal diverticulum					4
Generalized Megaesophagus					4-
Myasthenia Gravis					5
Esophagitis					5
Polyneuropathy					5-6
Breed Predispositions					6-7
Vomiting, Regurgitation, Coughing					7
Pattern Recognition					7-8
Diagnostics					8-11
Radiographs, with contrast					8-9
Minimum Database					10
Thyroid Panel, ACTH Stim, MG Titer					11
Ancillary Tests					11
Treatment					11-14
Elevated Feeding					11-13
Gastrostomy					14
Prokinetics					14
Aspiration Pneumonia					14
Esophagitis					14
Immunosuppression					14
Prognosis					15
Handout Summary					15
Diagnostic Aids - Adrenal Testing					5 pages
Dogs					1-4
ACTH Stimulation Test					1-2
Low Dose Dexamethasone Test					2-3
High Dose Dexamethasone Test					3
Urine Cortisol:Creatinine					3
Resting Cortisol					3-4
Abdominal Ultrasound					4
Endogenous ACTH					4
Cats					4-5
Low Dose Dexamethasone Test					4

Table Of Contents, p. 3

Section 2: Megaesophagus (cont'd)	White Tab
Diagnostic Aids - Adrenal Testing (cont'd)	5 pages
Cats (cont'd)	4-5
High Dose Dexamethasone Test	4-5
ACTH Stimulation Test	5
Lab Submission Information	3 pages
TAMU GI Lab Endocrinology Tests	1
Comparative Neuromuscular Laboratory	2-3
Submission Form	2
Submission Instructions	3
Drug Handouts	5 pages
Azathioprine	1 page
Prednisolone	2 pages
Pyridostigmine	2 pages
Client Information Handouts	4 pages
Hiatal Hernia	2 pages
Canine Megaesophagus	2 pages

Section 3: Liver Disease	Blue Tab
PowerPoint Slides	10 pages
Elevated Liver Enzymes in the Well Pet	1-2
Pattern Recognition	2
Diagnostics	3
Bile Acids	3
Ammonia	3
Chronic Liver Disease	3-4
Acute Liver Failure	4-5
Hepatic Encephalopathy	4-5
Case - Sebastian	5-10
Inky	10
Drug Handouts	17 pages
Colchicine	1 page
Cyproheptadine	1 page
Lactulose	2 pages
Milk Thistle	8 pages
SAMe	3 pages
Ursodiol	2 pages
Client Handouts	15 pages
Cholangiohepatitis	2 pages
Chronic Liver Disease	5 pages
Feline Fatty Liver	2 pages
Leptospirosis	3 pages
Portasystemic Shunts	3 pages

Table Of Contents, p. 4

Section 4: Dry Labs

Orange Tab

Liver Cytology					3 pages
Feeding Tube Placement					14 pages
Nasoesophageal Tube				1-2	
Pharyngostomy Tube				2	
Esophagosotomy Tube				3-5	
Gastrostomy Tube ELD Device				5-8	
Gastrostomy PEG Tube				8-10	
Surgical Gastrostomy Tube				10-11	
Securing & Removing the Gastrostomy Tube				11-12	
Jejunostomy Tube				13-14	
Care of the Feeding Tube				14	
Gastroenterology Cases					11 pages
Baylor & Lady - Chronic Gastric Volvulus				1	
Jovi - Megaesophagus, Hypoadrenocorticism				1-3	
Benji Boy - Foreign Body, Eosinophilic Enteritis, Hepatozoon				3-6	
Lila - Pancreatitis, Lymphoma				6-7	
Waddles - Diaphragmatic Hernia				7-8	
Mandy - Gastrointestinal Stromal Tumor				8-10	
Elvis - Foreign Body				10-11	

Section 5: Pancreatitis

Yellow Tab

PowerPoint Slides					22 pages
Acute vs. Chronic Pancreatitis				1	
Clinical Presentation				1-4	
Predispositions				1-3	
Clinical Signs				3-4	
Sequellae				4	
Diagnosis				4-13	
Bloodwork				5-7	
SNAP PL and PLI				6	
Ultrasound				7-10	
Radiographs				10-12	
Abdominocentesis				12	
Diagnostic Surgery				12-13	
Treatment				13-21	
Fluid Therapy				14-15	
Case - Flop				15-16	
Colloids, Antibiotics, Analgesia, Antioxidants				16	
Heparin, Antiemetics, Other				16-18	
Monitoring				18-19	
Nutrition				19-20	
Feline Pancreatitis				20-21	
Prognosis				21-22	
Handout Summary				22	
Diagnostic and Treatment Aids					8 pages
Bicarbonate Administration				3 pages	

Table Of Contents, p. 5

Section 5: Pancreatitis (cont'd)	Yellow Tab
Diagnostic and Treatment Aids (cont'd)	8 pages
Fluid Analysis Diagnostic Chart	1 page
Hyperlipidemia	3 pages
Potassium Supplementation	1 page
Laboratory Information	5 pages
Cornell Comparative Coagulation Sampling Instructions	2 pages
Cornell Comparative Coagulation Submission Form	1 page
Cornell Comparative Coagulation Test Roster	2 pages
Client Handouts	44 pages
Canine Pancreatitis	2 pages
Feline Pancreatitis	4 pages
Canned Cat Food Nutritional Information	18 pages
International Canned Foods	5 pages
Dry Cat Food Nutritional Information	6 pages
International Dry Foods	1 page
Fish Oil	8 pages
Section 6: Feeding Tubes	Green Tab
PowerPoint Slides - Carcinomas	17 pages
Nasoesophageal Tubes	1-2
Pharyngostomy Tubes	2
Esophagostomy Tubes	2-5
Gastrostomy Tubes	6-15
Jejunostomy	15
Managing Feeding Tubes	15-17
Handout Summary	17
Treatment Aids	8 pages
Tube Feeding Instructions	2 pages
Tube Feeding Diets	6 pages
Client Handout - Instructions for Tube Feeding	1 page
Section 7: Diarrhea	Pink Tab
PowerPoint Slides - Diarrhea	10 pages
Introduction	1
Diagnostics	1-2
Symptoms - Large vs Small Bowel	2
Empirical Treatment	2
Inflammatory Bowel Disease	2-5
Boxer Colitis	5-6
Antibiotic Responsive Diarrhea	6
Probiotics	7
Feline Hairballs	7
Cats are Carnivores	7-8
Feline Triaditis	8
Feline Megacolon	8-9
Feline GI Lymphoma	9

Table Of Contents, p. 6

Section 7: Diarrhea (cont'd)	Pink Tab
PowerPoint Slides - Diarrhea (cont'd)	10 pages
APUDoma	9
Acknowledgements	9
Diagnostic Aid - Purina Fecal Scoring	1 page
Client Handouts	15 pages
Antibiotic Responsive Diarrhea	2 pages
Constipation & Megacolon in Cats	3 pages
Giardia	1 page
Inflammatory Bowel Disease	5 pages
Protein Losing Enteropathies	4 pages
Drug Handouts	6 pages
Administering Drugs by Injection	1 page
Antidiarrheals	2 pages
Sulfasalazine	2 pages
Tylosin	1 page
Section 8: The Acute Abdomen	Gold Tab
PowerPoint Slides	13 pages
Differential Diagnosis	1-2
Types of Shock	2
Assessment of Collapse	2-3
Quick Assessment Tests	4
Fluid Analysis	4-5
Fluid Therapy	5-6
Ascites	6
History	6-7
Physical exam	7-11
Hemolysis	8-9
ECG	11-12
In House Diagnostics	12
SIRS	12
Drug Therapy	13
Imaging	13
Handout Summary	13
Diagnostic Aids	18 pages
Coagulopathy Diagnostic Chart	2 pages
Arrythmia Treatment	1 page
Antiarrhythmic Drugs	1 page
Arrhythmia Diagnostic Chart	2 pages
CPR Flow Sheet	1 page
Emergency Evaluation Cat	2 pages
Emergency Evaluation Dog	2 pages
Evaluating Blood Pressure in Dogs and Cats	7 pages

|